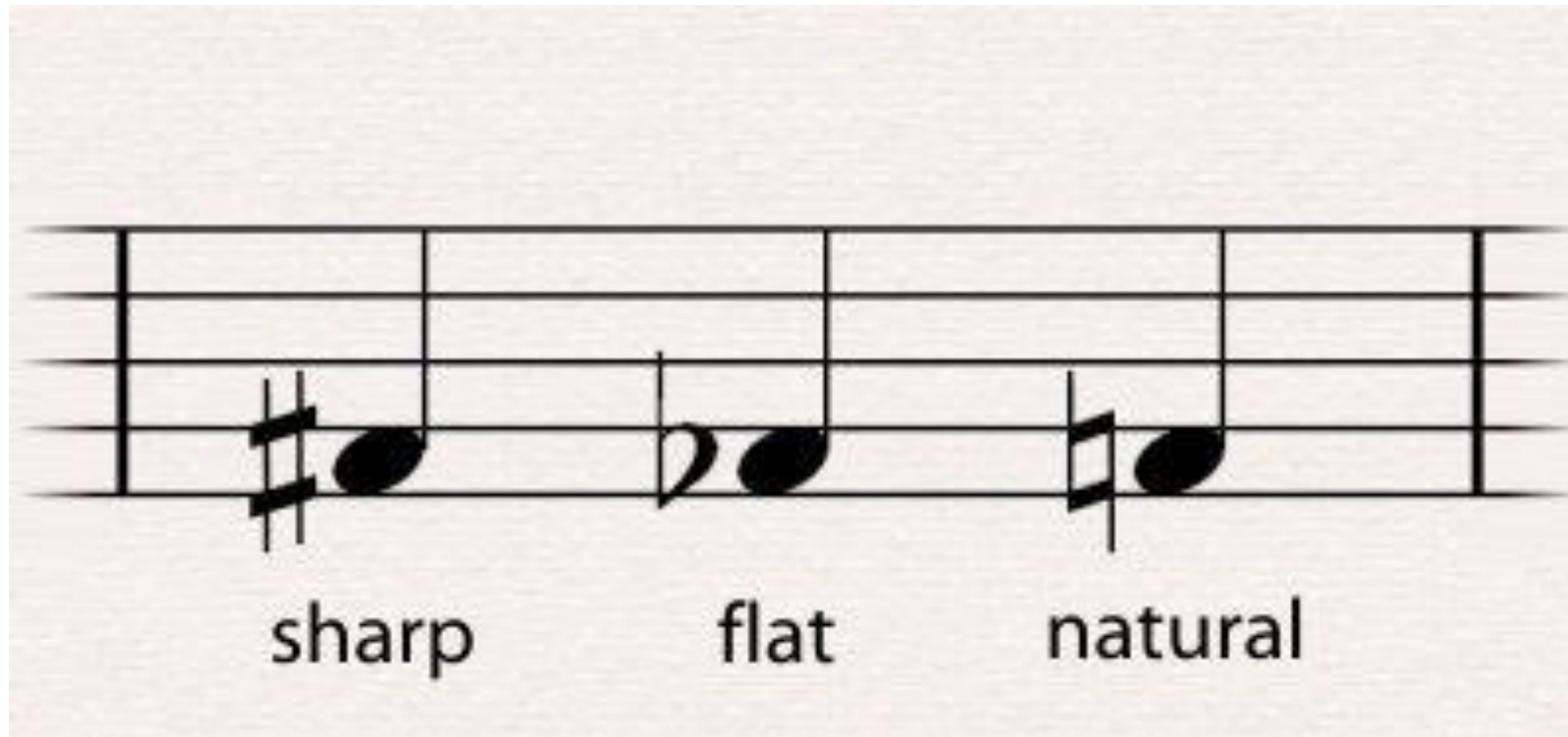


Music Fundamentals III

INTRODUCTION TO MUSIC THEORY



Sharps, Flats, Naturals



Double Sharps and Double Flats

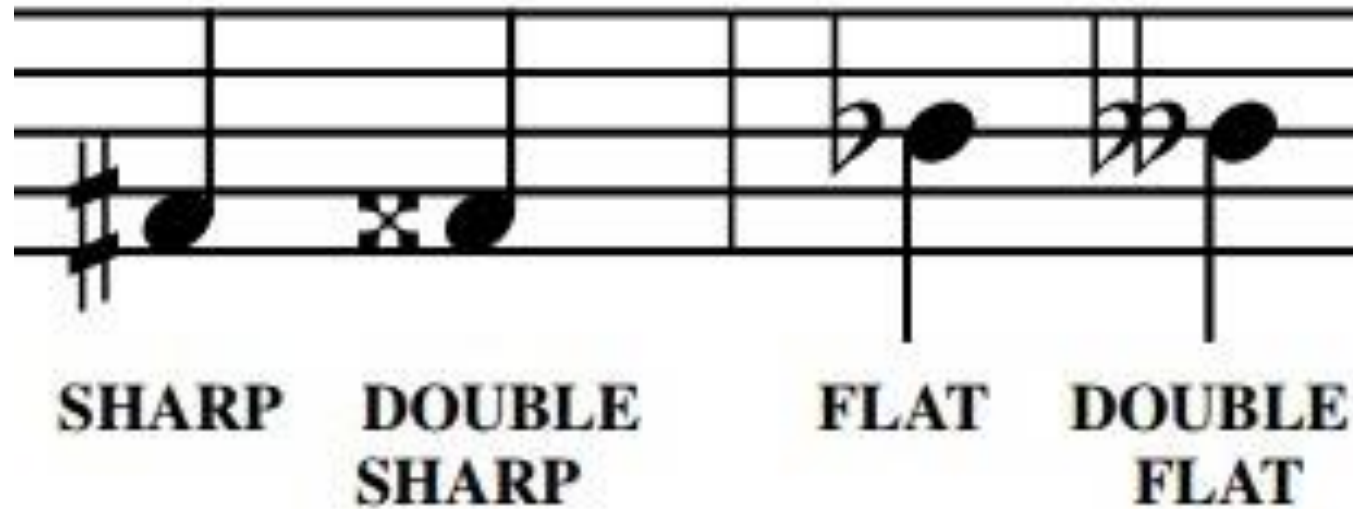
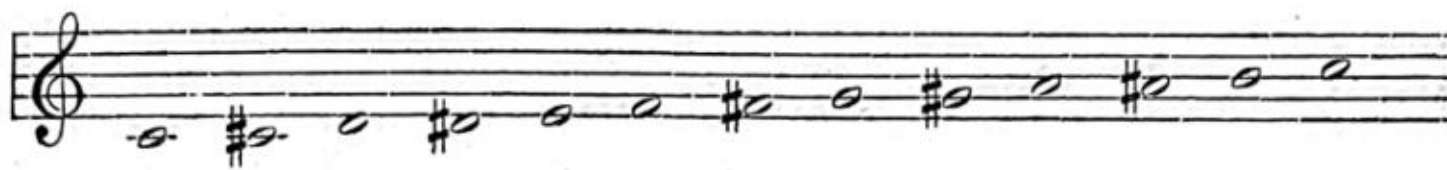
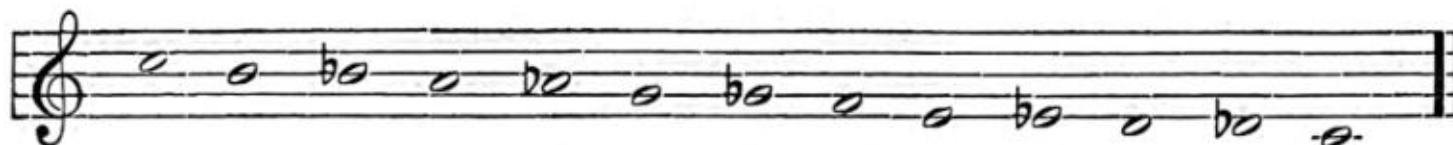


Illustration 18



1	#1	2	#2	3	4	#4	5	#5	6	#6	7	8.
C	C#	D	D#	E	F	F#	G	G#	A	A#	B	C.
Do	Di	Re	Ri	Mi	Fa	Fi	Sol	Si	La	Li	Ti	Do.



8	7	b7	6	b6	5	b5	4	3	b3	2	b2	1.
C	B	Bb	A	Ab	G	Gb	F	E	Eb	D	Db	C.
Do	Ti	Te	La	Le	Sol	Se	Fa	Mi	Me	Re	Rah	Do.

Chromatic Tones

No. 34

Chromatic tones in Key of C

Sharp, one, two, four, five and six.

di ri fi si li
Pronounced dee ree fee see lee

No. 35

Flat, seven, six, five, three and two.

te le se me rah
Pronounced tay lay say may raa

Enharmonic changes

Illustration 46

Enharmonic Change.



Illustration 47

Enharmonic Change of Key.



1 2 3 4 5 6 7 8.
Do Re Mi Fa Sol La Ti Do.

1 2 3 4 5 6 7 8.
Do Re Mi Fa Sol La Ti Do.

Dynamics

Musical Term	Meaning	Symbol
<i>pianississimo</i>	very, very soft	<i>ppp</i>
<i>pianissimo</i>	very soft	<i>pp</i>
<i>piano</i>	soft	<i>p</i>
<i>mezzo piano</i>	moderately soft	<i>mp</i>
<i>mezzo forte</i>	moderately loud	<i>mf</i>
<i>forte</i>	loud	<i>f</i>
<i>fortissimo</i>	very loud	<i>ff</i>
<i>fortississimo</i>	very, very loud	<i>fff</i>

Changing Dynamics

p *cresc.* - - *f* *decresc.* - - *p*

p *cresc.* - - *f* *dim.* - - *p*

p *f* *p*

Tempos

Grave	very slow and solemn	40-50
Largo	very slow and stately	40-50
Lento	extremely slow	50-60
Adagio	slow and leisurely	60-72
Maestoso	majestic, stately	72-84
Andante	at an easy walking pace	80-100
Moderato	moderate	100-120
Allegro	fairly quick speed	120-160
Vivace	lively, brisk	144-160
Presto	very fast	160-200
Prestissimo	extremely fast	168-208

Legato and Staccato



Changing Tempos

Real-Time Tempo Change Markings

Marking	Abbreviation	English
Accelerando	accel.	Gradually speed up
Ritardando	rit.	Gradually slow down (deliberate)
Rallantando	rall.	Gradually slow down (die away)
Ritenuto	riten.	Suddenly slow down
Rubato	rub. or rubato	Expressive speeding up and slowing down/sense of improv.
Tempo giusto		Strict tempo
Più mosso	più mosso	More motion or movement; faster
Meno mosso	meno mosso	Less motion or movement; slower

Expression

“Singers are of many kinds. Some of them have much emotion and others have little, but the ideal singer has much emotion, perfectly controlled by the mind. It's not what you sing, it's the way you sing it.”

How you sing is often says more than what you sing.

Phrasing



Breath Mark

PHRASE

1. A - ma - zing grace! how sweet the sound, That saved a wretch like me! —
2. 'Twas grace that taught my heart to fear, And grace my fears relieved; —
3. Thro' ma - ny dan - gers, toils, and snares, I have al - rea - dy come; —
4. The Lord has pro - mised good to me, His word my hope se - cures; —
5. When we've been there ten thou - sand years, Bright shin - ing as the sun, —



BREATHE HERE!

PHRASE

I once was lost, but now am found, Was blind, but now I see.
How pre - cious did that grace ap - pear The hour I first be - lieved!
'Tis grace hath bro't me safe thus far, And grace will lead me home.
He will my shield and por - tion be As long as life en - dures.
We've no less days to sing God's praise Than when we first be - gun.

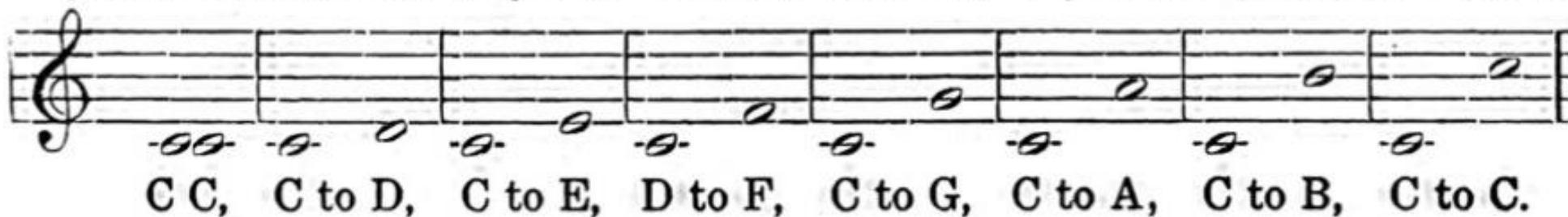


Intervals

Illustration 48

The Regular Intervals of the Major Scale.

Per. Prime, Maj. 2nd, Maj. 3rd, Per. 4th, Per. 5th, Maj. 6th, Maj. 7th, Per. Octave.

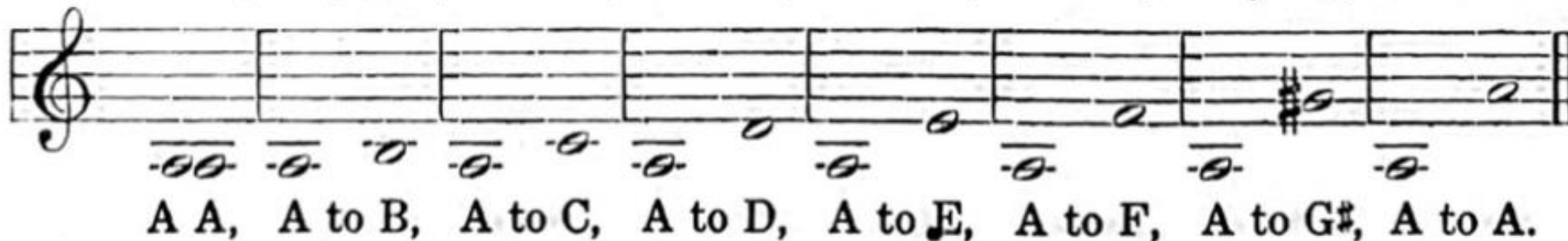


A musical staff in treble clef showing the intervals of the major scale. The staff is divided into eight measures, each containing a pair of notes. Below the staff, the intervals are labeled: C C, C to D, C to E, D to F, C to G, C to A, C to B, C to C.

Illustration 49

The Regular Intervals of the Harmonic Minor Scale.

Per. Prime, Maj. 2nd, Min. 3rd, Per. 4th, Per. 5th, Min. 6th, Maj. 7th, Per. Octave.



A musical staff in treble clef showing the intervals of the harmonic minor scale. The staff is divided into eight measures, each containing a pair of notes. Below the staff, the intervals are labeled: A A, A to B, A to C, A to D, A to E, A to F, A to G#, A to A.

Chords

The diagram illustrates the seven diatonic chords of the C major scale on a treble clef staff. The notes on the staff are C4, D4, E4, F4, G4, A4, and B4. The chords are:

- I (C):** C4, E4, G4. Labeled as *tonic*.
- ii (Dm):** D4, F4, A4. Labeled as *supertonic*.
- iii (Em):** E4, G4, B4. Labeled as *mediant*.
- IV (F):** F4, A4, C5. Labeled as *subdominant*.
- V (G):** G4, B4, D5. Labeled as *dominant*.
- vi (Am):** A4, C5, E5. Labeled as *submediant*.
- vii° (Bdim):** B4, D5, F5. Labeled as *leading note*.
- I (C):** C4, E4, G4. Labeled as *tonic*.

Congratulations!

